

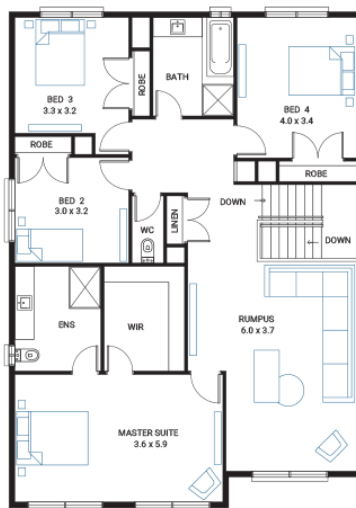


## Jarrah 31



**Address**  
Lot 516, Octave, Junction Village, 3977

**Facade** Bay Mk1  
**Lot Width** 14  
**Lot size** 392 m<sup>2</sup>  
**House size** 292 m<sup>2</sup>



### Available Structural Options

Grand Ensuite, Deluxe Kitchen, Powder Room, Extended Laundry & WIP, Butler's Pantry, Stair Seat, Deluxe Bathroom, Additional WIR, Balcony 1, Balcony 2,

### Your Inclusions

- Double glazing to all fully glazed aluminium external windows and sliding doors.
- `Fisher and Paykel` stainless steel appliances (900mm)
- Engineered stone benchtops with 20mm edge profile to Kitchen.
- 2550mm ceiling heights to Ground Floor areas.
- Laminate overhead cupboards with concealed rangehood to Kitchen
- Towel rails and toilet roll holders to wet areas
- Tiled shower bases to Bathroom and Ensuite
- Built in laundry laminate unit with inset trough
- Flooring throughout (tiles and carpet)
- `Colorbond` Metal Roof
- Insect Screens with fibreglass mesh to all openable windows.
- Gas ducted heating with ceiling outlets to Bedrooms and all Living areas.
- `Dulux` Wash and Wear 3 Coat paint system to internal walls.
- 25 Year Structural Warranty

Package Enquiries  
Gemma Rosbiffi - 0409 801 884 ,  
gemma@beachwood-homes.com.au

○CTAVE